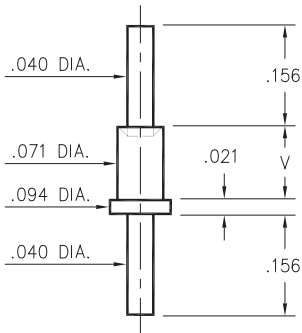


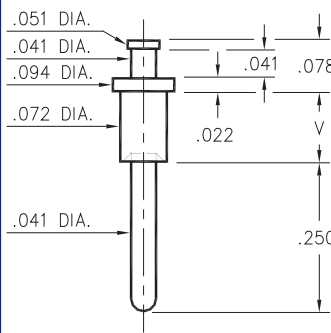
## 2319



**2319-X-00-XX-00-00-07-0**  
Swage mount in .076 hole

- X -	Board Thickness	Length V
1	.031	.051
2	.062	.082
3	.094	.113

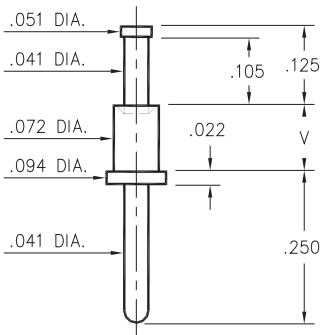
## 2313



**2313-X-00-XX-00-00-07-0**  
Swage mount in .076 hole

- X -	Board Thickness	Length V
1	.031	.051
2	.062	.084
3	.094	.113
4	.125	.145

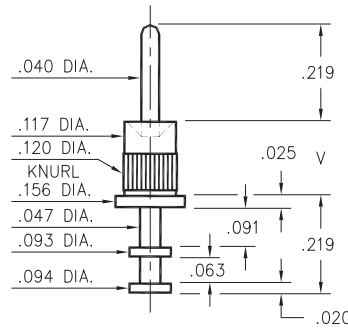
## 2321



**2321-X-00-XX-00-00-07-0**  
Swage mount in .076 hole

- X -	Board Thickness	Length V
1	.031	.051
2	.062	.082
3	.094	.113
4	.125	.145

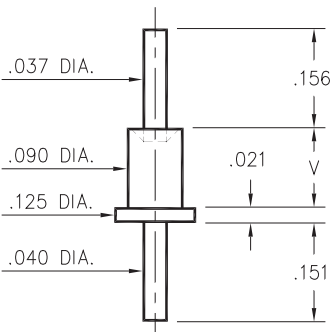
## 2706



**2706-X-00-XX-00-00-07-0**  
Swage mount in .120 hole

- X -	Board Thickness	Length V
1	.031	.063
2	.062	.093
3	.094	.125
4	.125	.156

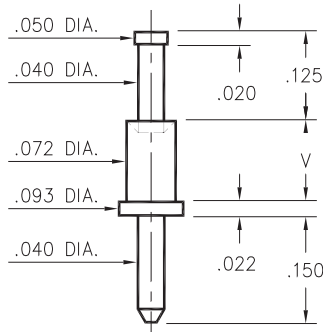
## 2530



**2530-X-00-XX-00-00-07-0**  
Swage mount in .094 hole

- X -	Board Thickness	Length V
2	.062	.094
3	.094	.125
4	.125	.156

## 3156



**3156-X-00-XX-00-00-08-0**  
Swage mount in .076 hole

Basic Part Number	Board Thickness	Length V
3156-1	.031	.051
3156-2	.062	.082
3156-3	.094	.113
3156-4	.125	.145

### SPECIFICATIONS

**PIN MATERIAL:**  
Brass Alloy 360, 1/2 Hard  
Swage pins are annealed

**DIMENSION IN INCHES**  
**TOLERANCES ON:**  
LENGTHS: ±.005  
DIAMETERS: ±.002  
ANGLES: ± 2°

**ORDER CODE: XXXX - X - 00 - XX - 00 - 00 - XX - 0**

**BASIC PART #**

**SPECIFY PIN FINISH:**

- 01 200µ" TIN/LEAD OVER NICKEL
- ◇ 80 200µ" TIN OVER NICKEL (RoHS)
- ◇ 44 300µ" SILVER OVER COPPER (RoHS)
- ◇ 50 300µ" ELECTRO-SOLDER (RoHS) (60/40 SnPb)

